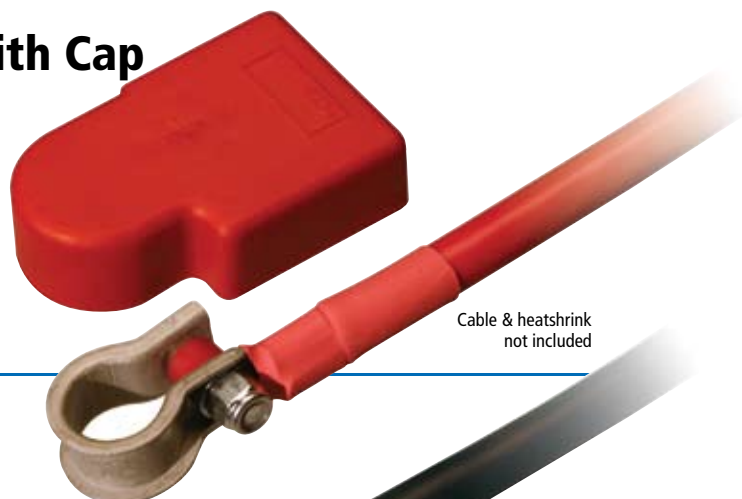


BT910-P1

Single Distribution Terminal with Cap

| | |
|---------------------|------------------------------------|
| TERMINAL TYPE | Crimp |
| POST TYPE | Positive |
| CABLE SIZE | 25–35mm ² (3 – 2 B&S) |
| FULLY INSULATED CAP | Prevents accidental short circuits |



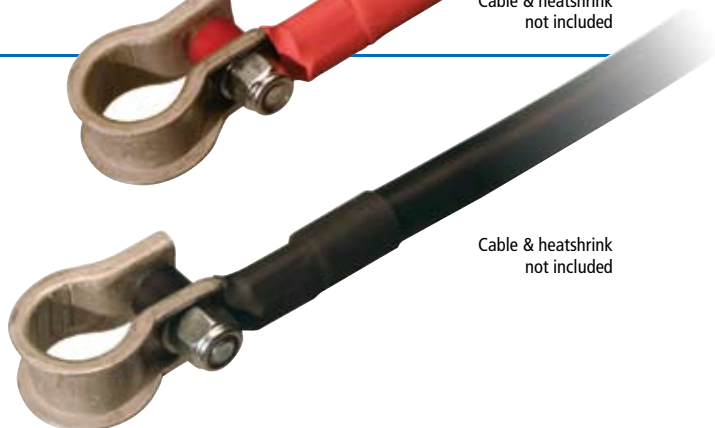
Cable & heatshrink not included

BT910-P25 As above bulk pack of 25

BT910-N1

Single Distribution Terminal

| | |
|---------------|----------------------------------|
| TERMINAL TYPE | Crimp |
| POST TYPE | Negative |
| CABLE SIZE | 25–35mm ² (3 – 2 B&S) |



Cable & heatshrink not included

BT910-N25 As above bulk pack of 25

BT925-P1

Positive – Red Cap

BT925-N1

Negative

Battery Distribution Terminal

Three way distribution: Quickly converts your battery post so you can easily connect 3 cables to your battery. Ideal for use when installing auxiliary accessories or connecting to a secondary battery. Includes 3 terminals to ensure quick connection. Makes a professional and practical installation for distributing power.

Specifications

- 1 x M8 terminal suits 20–40mm² (4 – 2 B&S) cable
- 2 x M6 terminal suits 8–20mm² (8 – 4 B&S) cable

FEATURES



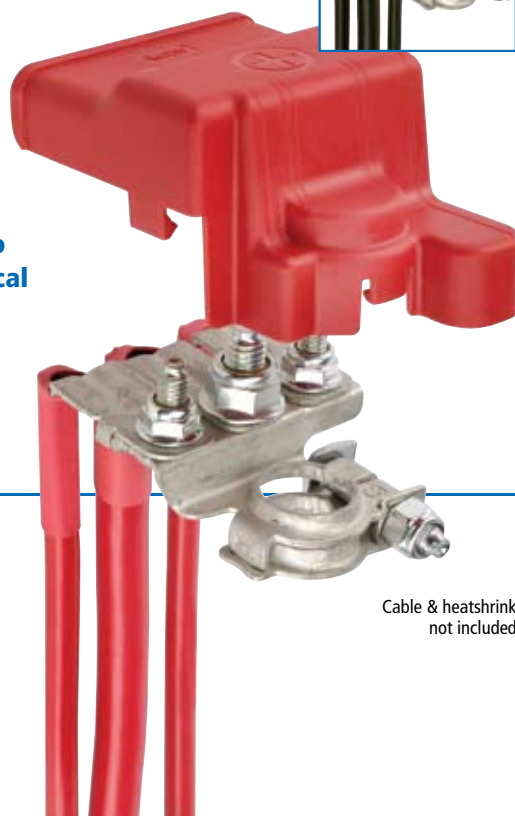
Fully Insulated Cap

Prevents accidental short circuits (positive terminal only)



Economical

Offers a professional finish and converts battery post to a convenient 3 way distribution point



Cable & heatshrink not included

Replacement Terminals to suit BT925

| | |
|-----------------|---|
| BT925-T1 | M6 8–20mm ² (8 – 4 B&S) Terminal to suit 925 series distribution terminal |
| BT925-T2 | M8 20–40mm ² (4 – 2 B&S) Terminal to suit 925 series distribution terminal |



BT925-T1

BT925-T2

BT950-P1

Fused Battery Distribution Terminal

Converts your positive battery post into three outlets with fuse protection. Perfect for 4WDs and caravans where multiple accessories or dual battery systems are in use.



FEATURES



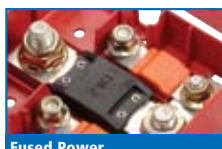
3 Way Distribution

Makes a professional and practical installation for distributing power



Fully Insulated Cap

Prevents accidental short circuits



Fused Power

Provides 3 fused outlets making it safe and easy to install auxiliary cable

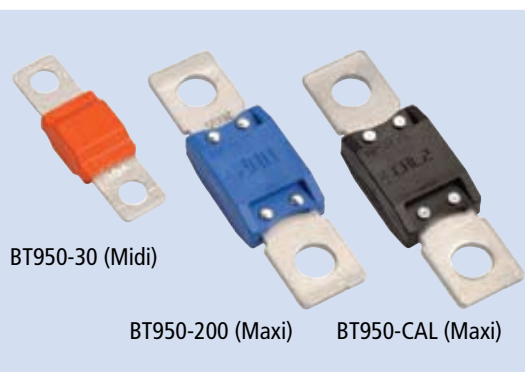


Cal 2 Fuse

Allows load of starter motor or winch, protects against direct short

FUSE OPTIONS TO SUIT BT950-P1

| | |
|------------------|---|
| BT950-30 | 30A fuse (Orange Midi) |
| BT950-60 | 60A fuse (Yellow Midi) |
| BT950-100 | 100A fuse (Yellow Maxi) |
| BT950-150 | 150A fuse (Orange Maxi) |
| BT950-200 | 200A fuse (Blue Maxi) |
| BT950-250 | 250A fuse (Pink Maxi) |
| BT950-CAL | 150A continuous/800A max CAL2 fuse (Black Maxi) |



BT950-30 (Midi)

BT950-200 (Maxi)

BT950-CAL (Maxi)

Cable Lugs

Manufactured using electro tinned copper to deliver superior conductivity, Projecta cable lugs feature a long shank for a more secure double crimp, and bell ends for easy cable insertion.

| BULK PART NO. PACK (50) | BLISTERED PART NO. BLISTER (2) | STUD SIZE | SUITS CABLE SIZE | INTERNAL DIAMETER |
|---|--------------------------------|-----------|------------------------------|-------------------|
|  | CL20-50 | 6mm | 10mm ² 8 B&S | 4.5mm |
| | CL21-50 | 8mm | | |
|  | CL25-50 | 8mm | 15mm ² 6 B&S | 5.4mm |
|  | CL29-50 | 8mm | 25mm ² 3 B&S | 6.8mm |
| | CL30-50 | 10mm | | |
|  | CL33-50 | 8mm | 35mm ² 2 B&S | 8.2mm |
| | CL34-50 | 10mm | | |
|  | CL37-50 | 8mm | 50mm ² 0 B&S | 9.5mm |
| | CL38-50 | 10mm | | |
|  | CL40-50 | 8mm | 70mm ² 00 B&S | 11.2mm |
| | CL41-50 | 10mm | | |
| | CL42-50 | 13mm | | |
|  | CL46-50 | 10mm | 95mm ² 000 B&S | 13.4mm |
| | CL48-50 | 13mm | | |

Terminal and Lug Covers

Made in Italy, the Projecta range of terminal and lug covers are manufactured from the highest quality rubber and PVC materials ensuring durability and longevity. Their main function is to protect live power connections from accidental shorts acting as an added measure of safety when a battery system is located within an engine bay or similar and may come into contact with conductive materials. Available in a range of styles to suit a variety of cable and terminal sizes and offered in convenient blister packs of two for retail or bulk packs of 10 for trade.



CLC100 Blister-2 Rubber Cable Lug Cover

- Positive and negative
- Insulates battery lug preventing short circuit
- Suits most common sized cable lugs

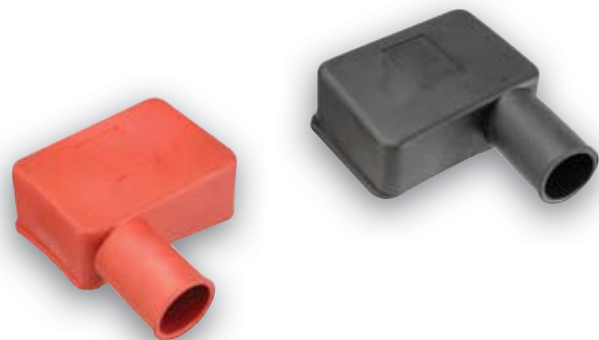
| | |
|-------------------|-------------------------------|
| CLC100B-10 | As above bulk pack 10 (Black) |
| CLC100R-10 | As above bulk pack 10 (Red) |



BTC100 Blister-2 PVC Terminal Cover

- Positive and negative
- Insulates battery terminal preventing short circuit
- Suits: BT4, BT21, BT23, BT142, BT642

| | |
|-------------------|-------------------------------|
| BTC100B-10 | As above bulk pack 10 (Black) |
| BTC100R-10 | As above bulk pack 10 (Red) |



BTC200 Blister-2 Straight PVC Terminal Cover

- Positive and negative
- Insulates battery terminal preventing short circuit
- Suits: BT11, BT32, BT36, BT59, BT59S, BT142, BT611, BT642, BT642H, BT811

| | |
|-------------------|-------------------------------|
| BTC200B-10 | As above bulk pack 10 (Black) |
| BTC200R-10 | As above bulk pack 10 (Red) |



BTC300 Blister-2 PVC Terminal Cover

- Positive and negative
- Insulates battery terminal preventing short circuit
- Suits: BT4, BT21, BT23, BT142, BT642

| | |
|-------------------|-------------------------------|
| BTC300B-10 | As above bulk pack 10 (Black) |
| BTC300R-10 | As above bulk pack 10 (Red) |

